

Discharge Measurement Summary

Date Generated: Thu Sep 26 2024

File Information

File Name 357001.039.WAD
Start Date and Time 2021/09/21 10:24:34

Site Details

Site Name EAST CANAL
Operator(s) KEK

System Information

Sensor Type FlowTracker
Serial # P2377
CPU Firmware Version 3.9
Software Ver 2.30
Mounting Correction 0.0%

Units (English Units)

Distance ft
Velocity ft/s
Area ft²
Discharge cfs

Discharge Uncertainty

Category	ISO	Stats
Accuracy	1.0%	1.0%
Depth	0.3%	1.1%
Velocity	0.4%	2.1%
Width	0.1%	0.1%
Method	1.4%	-
# Stations	1.8%	-
Overall	2.5%	2.6%

Summary

Averaging Int. 40 # Stations 29
Start Edge REW Total Width 19.400
Mean SNR 9.1 dB Total Area 11.004
Mean Temp 49.47 °F Mean Depth 0.567
Disch. Equation Mid-Section Mean Velocity 0.7263
Total Discharge 7.9928

Measurement Results

St	Clock	Loc	Method	Depth	%Dep	MeasD	Vel	CorrFact	MeanV	Area	Flow	%Q
0	10:24	0.60	None	0.680	0.0	0.0	0.0000	0.75	0.7269	0.136	0.0989	1.2
1	10:24	1.00	0.6	0.680	0.6	0.272	0.9692	1.00	0.9692	0.238	0.2306	2.9
2	10:25	1.30	0.6	0.670	0.6	0.268	1.1522	1.00	1.1522	0.201	0.2315	2.9
3	10:27	1.60	0.6	0.620	0.6	0.248	1.3556	1.00	1.3556	0.186	0.2521	3.2
4	10:28	1.90	0.6	0.620	0.6	0.248	1.4081	1.00	1.4081	0.186	0.2618	3.3
5	10:29	2.20	0.6	0.650	0.6	0.260	1.3268	1.00	1.3268	0.195	0.2586	3.2
6	10:30	2.50	0.6	0.680	0.6	0.272	1.4524	1.00	1.4524	0.204	0.2962	3.7
7	10:31	2.80	0.6	0.670	0.6	0.268	1.3409	1.00	1.3409	0.235	0.3148	3.9
8	10:33	3.20	0.6	0.620	0.6	0.248	1.4396	1.00	1.4396	0.249	0.3579	4.5
9	10:34	3.60	0.6	0.580	0.6	0.232	1.2480	1.00	1.2480	0.233	0.2902	3.6
10	10:35	4.00	0.6	0.500	0.6	0.200	1.4180	1.00	1.4180	0.225	0.3187	4.0
11	10:37	4.50	0.6	0.510	0.6	0.204	1.2904	1.00	1.2904	0.254	0.3276	4.1
12	10:38	5.00	0.6	0.500	0.6	0.200	1.3163	1.00	1.3163	0.249	0.3278	4.1
13	10:39	5.50	0.6	0.460	0.6	0.184	1.2359	1.00	1.2359	0.229	0.2831	3.5
14	10:40	5.99	0.6	0.380	0.6	0.152	1.2011	1.00	1.2011	0.286	0.3431	4.3
15	10:41	7.00	0.6	0.380	0.6	0.152	0.9341	1.00	0.9341	0.382	0.3570	4.5
16	10:43	8.01	0.6	0.400	0.6	0.160	0.9068	1.00	0.9068	0.400	0.3627	4.5
17	10:44	9.00	0.6	0.440	0.6	0.176	0.6962	1.00	0.6962	0.439	0.3054	3.8
18	10:45	10.00	0.6	0.520	0.6	0.208	0.7333	1.00	0.7333	0.520	0.3813	4.8
19	10:46	11.00	0.6	0.460	0.6	0.184	0.6608	1.00	0.6608	0.460	0.3039	3.8
20	10:47	12.00	0.6	0.600	0.6	0.240	0.5299	1.00	0.5299	0.600	0.3179	4.0
21	10:48	13.00	0.6	0.560	0.6	0.224	0.5138	1.00	0.5138	0.560	0.2877	3.6
22	10:50	14.00	0.6	0.610	0.6	0.244	0.4291	1.00	0.4291	0.610	0.2617	3.3
23	10:51	15.00	0.6	0.690	0.6	0.276	0.4442	1.00	0.4442	0.690	0.3065	3.8
24	10:52	16.00	0.6	0.730	0.6	0.292	0.3379	1.00	0.3379	0.730	0.2467	3.1
25	10:53	17.00	0.6	0.760	0.6	0.304	0.3353	1.00	0.3353	0.760	0.2548	3.2
26	10:55	18.00	0.6	0.800	0.6	0.320	0.2694	1.00	0.2694	0.800	0.2155	2.7
27	10:56	19.00	0.6	0.750	0.6	0.300	0.2651	1.00	0.2651	0.750	0.1988	2.5
28	10:56	20.00	None	0.000	0.0	0.0	0.0000	1.00	0.0000	0.000	0.0000	0.0

Rows in italics indicate a QC warning. See the Quality Control page of this report for more information.

Discharge Measurement Summary

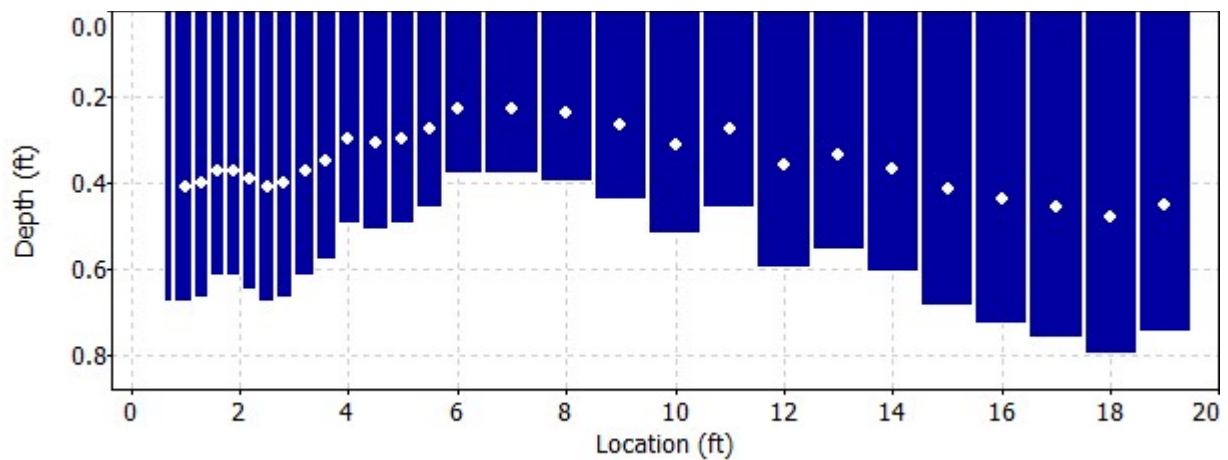
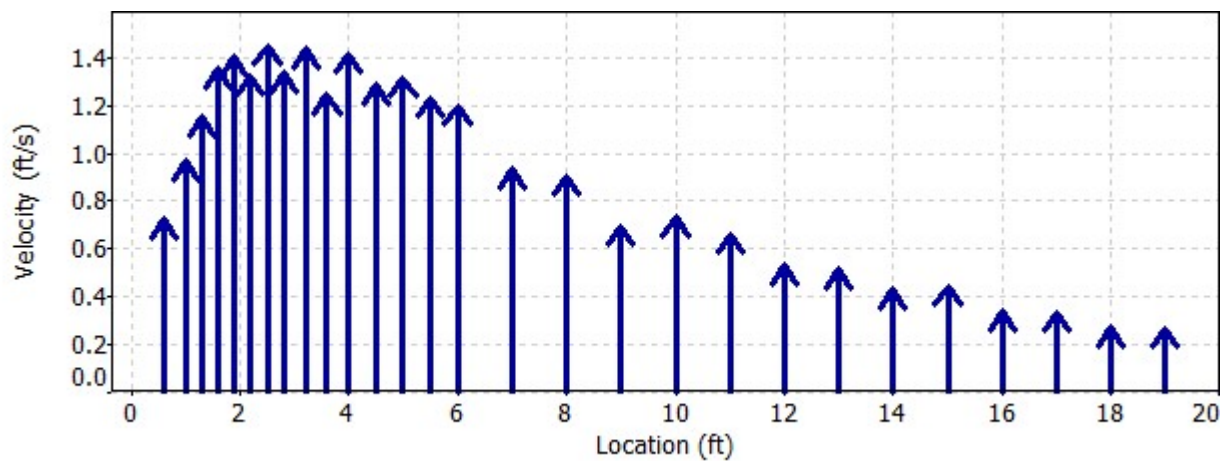
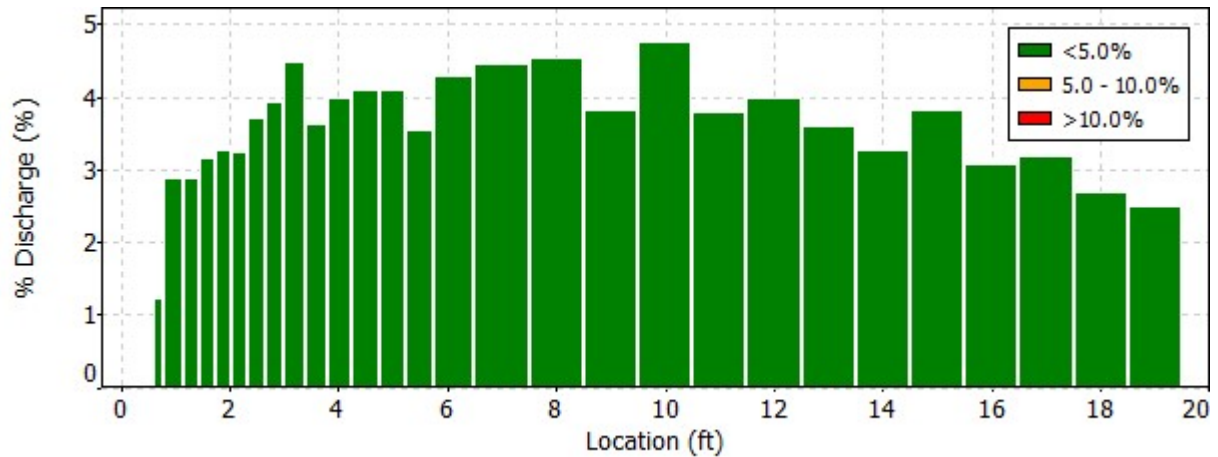
Date Generated: Thu Sep 26 2024

File Information

File Name 357001.039.WAD
Start Date and Time 2021/09/21 10:24:34

Site Details

Site Name EAST CANAL
Operator(s) KEK



Discharge Measurement Summary

Date Generated: Thu Sep 26 2024

File Information

File Name 357001.039.WAD
Start Date and Time 2021/09/21 10:24:34

Site Details

Site Name EAST CANAL
Operator(s) KEK

Quality Control

St	Loc	%Dep	Message
1	1.00	0.6	High angle: -32
2	1.30	0.6	High angle: -29
3	1.60	0.6	High angle: -27
4	1.90	0.6	High angle: -24
5	2.20	0.6	High angle: -31
6	2.50	0.6	High angle: -21
7	2.80	0.6	High angle: -21
9	3.60	0.6	High angle: -31
10	4.00	0.6	High angle: -21
11	4.50	0.6	High angle: -26
12	5.00	0.6	High angle: -26
13	5.50	0.6	High angle: -32
14	5.99	0.6	High angle: -35
15	7.00	0.6	High angle: -40
16	8.01	0.6	High angle: -31
17	9.00	0.6	High angle: -35
18	10.00	0.6	High angle: -23

Discharge Measurement Summary

Date Generated: Thu Sep 26 2024

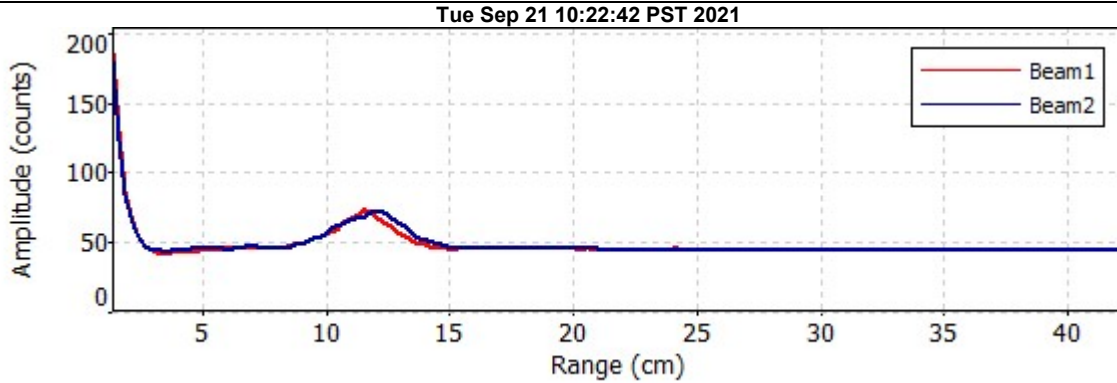
File Information

File Name 357001.039.WAD
Start Date and Time 2021/09/21 10:24:34

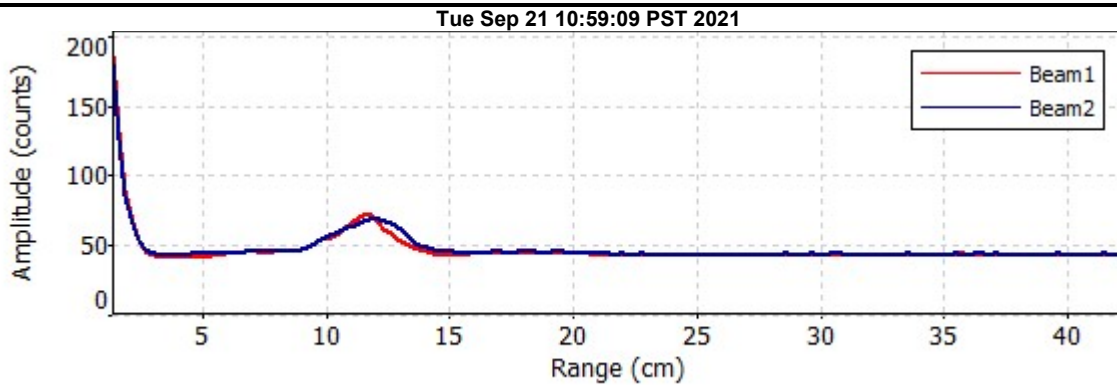
Site Details

Site Name EAST CANAL
Operator(s) KEK

Automatic Quality Control Test (BeamCheck)



- ✓ Noise level check - Pass
- ✓ SNR check - Pass
- ✓ Peak location check - Pass
- ✓ Peak shape check - Pass



- ✓ Noise level check - Pass
- ✓ SNR check - Pass
- ✓ Peak location check - Pass
- ✓ Peak shape check - Pass